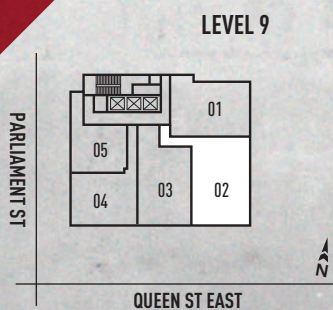


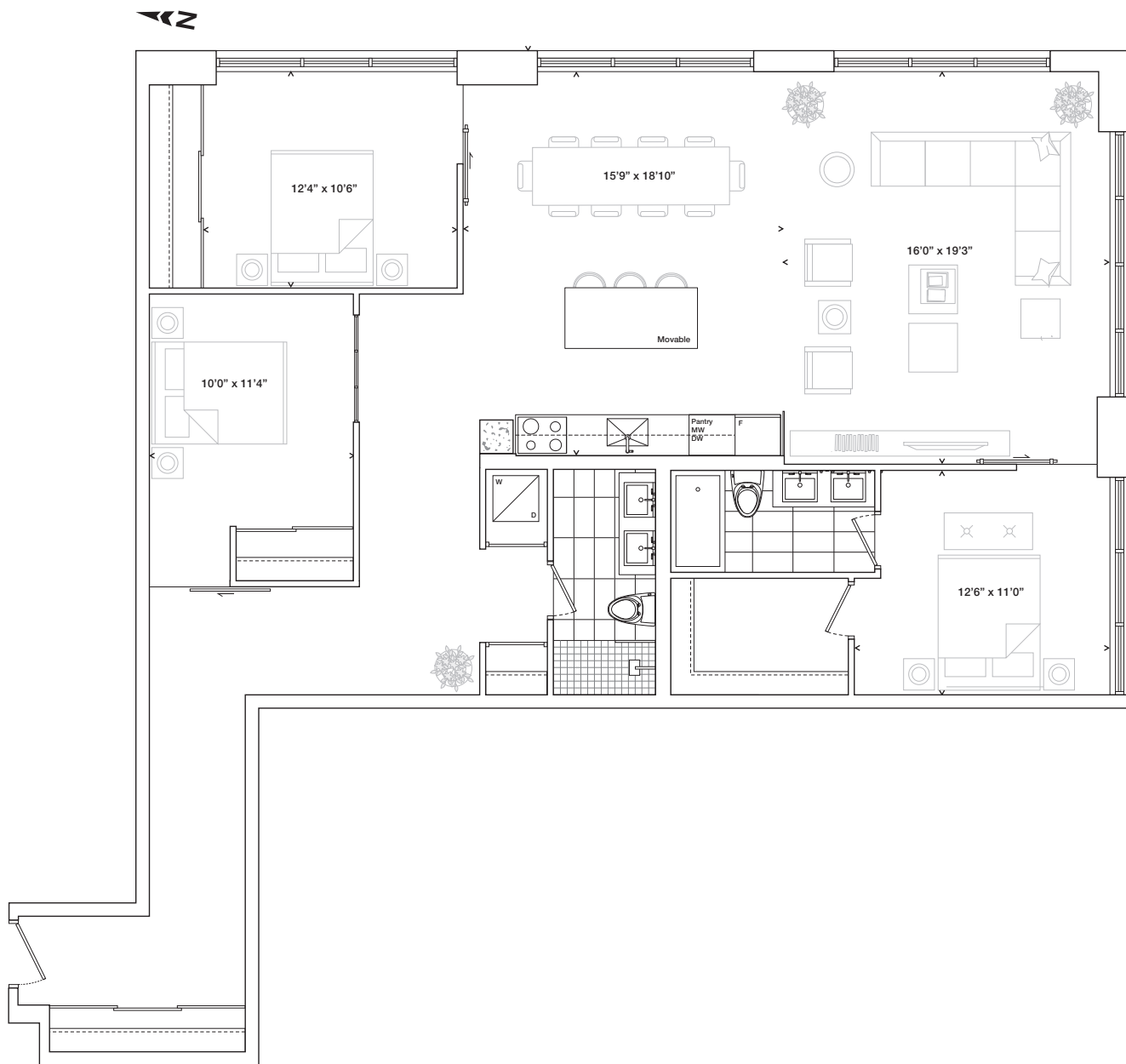
LIVE WORK

STRENGTH

02



EAST AND SOUTH FACING
1,674 SF



PARLIAMENT & CO
presents



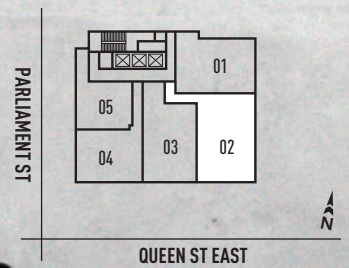
WAREHOUSELOFTS
TORONTO

ALL SIZES, DIMENSIONS AND SPECIFICATIONS ARE SUBJECT TO CHANGE WITHOUT NOTICE. THIS PLAN IS NOT TO SCALE AND IS SUBJECT TO ARCHITECTURAL REVIEW AND REVISION. IN ORDER TO COMPLY WITH BUILDING SITE CONDITIONS AND MUNICIPAL, STRUCTURAL, VENDOR AND/OR ARCHITECTURAL REQUIREMENTS, ACTUAL LIVING AREAS MAY VARY FROM FLOOR AREA STATED. FLOOR AREA HAS BEEN MEASURED AND MAY VARY IN ACCORDANCE WITH BULLETIN #22 PUBLISHED BY THE TARIION WARRANTY CORPORATION. WINDOW LOCATION, SIZE AND TYPE MAY VARY WITHOUT NOTICE. PURCHASERS ACKNOWLEDGE THAT THE DWELLING UNITS WITH TERRACES MAY CONTAIN AN INTERIOR STEP UP FOR ACCESS TO SUCH TERRACES. FURNISHINGS ARE FOR DISPLAY PURPOSES ONLY. LOCATION OF COLUMNS, SIZE AND TYPE MAY VARY WITHOUT NOTICE. E.&O.E. NOVEMBER 2020

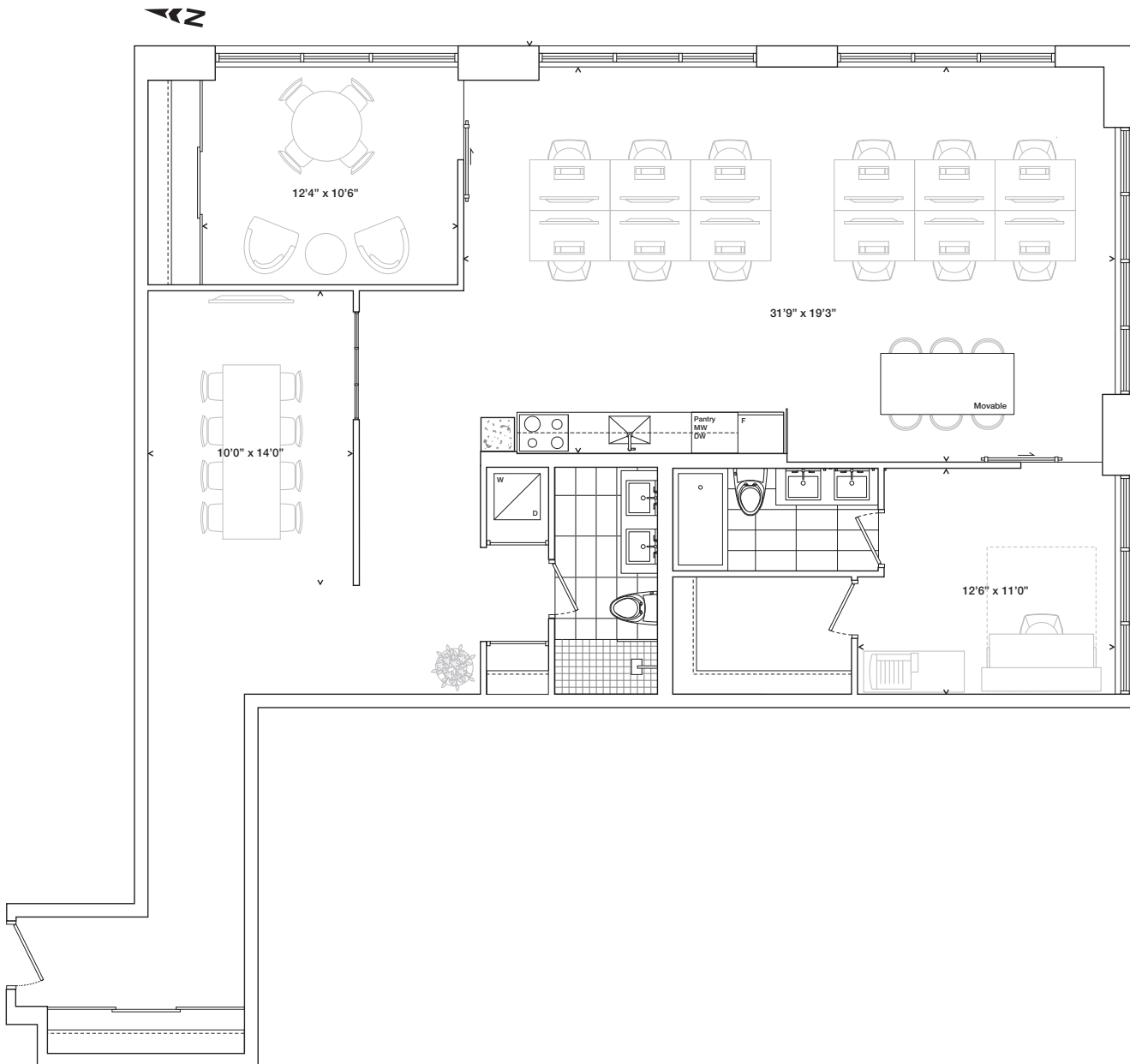
STRENGTH

02

LEVEL 9



EAST AND SOUTH FACING
1,674 SF



PARLIAMENT & CO
presents



WAREHOUSE LOFTS
TORONTO



ALL SIZES, DIMENSIONS AND SPECIFICATIONS ARE SUBJECT TO CHANGE WITHOUT NOTICE. THIS PLAN IS NOT TO SCALE AND IS SUBJECT TO ARCHITECTURAL REVIEW AND REVISION. IN ORDER TO COMPLY WITH BUILDING SITE CONDITIONS AND MUNICIPAL, STRUCTURAL, VENDOR AND/OR ARCHITECTURAL REQUIREMENTS, ACTUAL LIVING AREAS MAY VARY FROM FLOOR AREA STATED. FLOOR AREA HAS BEEN MEASURED AND MAY VARY IN ACCORDANCE WITH BULLETIN #22 PUBLISHED BY THE TARIION WARRANTY CORPORATION. WINDOW LOCATION, SIZE AND TYPE MAY VARY WITHOUT NOTICE. PURCHASERS ACKNOWLEDGE THAT THE DWELLING UNITS WITH TERRACES MAY CONTAIN AN INTERIOR STEP UP FOR ACCESS TO SUCH TERRACES. FURNISHINGS ARE FOR DISPLAY PURPOSES ONLY. LOCATION OF COLUMNS, SIZE AND TYPE MAY VARY WITHOUT NOTICE. E.&O.E. NOVEMBER 2020